



# Sustainable Furniture

March 2015

# OCP Sustainable Purchasing Program – Who We Are & What We Do

- Assist DC in meeting its sustainability goals by furthering green procurement of goods and services through:
  - Developing and maintaining environmental specifications for products and services
  - Offering training and online resources for DC Agencies and procurement professionals to assist in green procurement
  - Vendor education and outreach
  - Consulting services for programs seeking to buy green
  - Tracking green purchasing progress and recommending improvements to the program

# Learning Objectives

- At the completion of this training, you will be:
  - Introduced to the benefits of procuring sustainable furniture products.
  - Introduced to the sustainable specifications for furniture products.
  - Informed of differences in cost and performance of products meeting the specifications compared to conventional products.
  - Aware of options for including more aggressive environmental attributes not included in the guidance specification.

# Scope

This specification addresses furniture used in schools and offices, including:

1. Chairs
2. Cubicles
3. Desks
4. Modules
5. Shelves
6. Sofas
7. Storage cabinets
8. Tables
9. Workstations



# Importance

**Furniture is a product category with substantial spending by District purchasers, and potential for clear environmental benefits.**

- Many furniture products off-gas chemicals linked to **allergies, asthma, reproductive disorders, and cancer**
- Sustainable furniture limits emissions of these harmful chemicals, **protecting the health of building occupants**
- Work performance may improve by up to **10%** by improving indoor air quality
- The District spent **\$19.2 million** on furniture in FY11 – FY13.
- DC's **Green Building Act** requires LEED Gold certification for New Construction. Sustainable furniture **can help achieve LEED New Construction credits**



# Environmental Requirements

Furniture shall be certified to at least **ONE (1)** of the following:



GREENGUARD



SCS Indoor Advantage



Cradle to Cradle (certified at Basic, Bronze, Silver, Gold, or Platinum)



BIFMA Level (certified at Level 1, 2, or 3), with scorecard provided that shows at least one point for Credit 7.6, Low-emitting Furniture

# Environmental Requirements

## Rationale

- All options for meeting environmental requirements for furniture support earning points through LEED Gold for New Construction.
- LEED Gold New Construction certification is required through DC's Green Building Act.
- The majority of furniture the District procures is purchased through new construction projects.
- Furniture purchased for other projects that are not deemed new construction should be able to meet these requirements given the ability of the District to comply with the requirements for new construction projects.

# Cost, Performance, and Availability

- **Certified furniture is widely available**
  - The 7 major furniture companies sell eligible products and 1/3 of BIFMA (furniture association) members sell Level products
  - District vendors carry all recommended certifications
- **The District is already purchasing GREENGUARD furniture for new construction projects → current spec increases competition by offering other credible eco-labels**
- **Sustainable furniture performs just as well as conventional furniture**
- **Sustainable furniture is cost competitive**



# SCS & GREENGUARD Eco-Label Background



GREENGUARD



SCS Indoor Advantage

- Address chemical emissions from furniture which impact **indoor air quality** during its use.
- Are **single attribute labels** because they only address one aspect of environmental performance.
- Contain two levels of certification with Gold level being the most stringent. Both certifications for each label meet DC requirements.
- Support earning the **LEED v4 Indoor Environmental Quality: Low-Emitting Materials credit**.

# C2C & BIFMA Level Eco-Label Background



Cradle to Cradle  
(C2C)



BIFMA Level

- Are **multi attribute labels** because they address multiple aspects of environmental performance.
- A product certified to a multi-attribute label may not have a particular attribute.
- Check score cards or product data sheets to verify criteria for specific attributes such as indoor air-quality.



# Cradle to Cradle (C2C) Eco-Label Background

- Evaluates products on material health, material reutilization, renewable energy and carbon management, water stewardship, and social fairness.
- Products certified at five levels (Basic to Platinum). All recognized by DC's Sustainable Purchasing Program.
- C2C's indoor air quality approach:
  - Basic certification: A complete material inventory is conducted to identify potentially harmful materials.
  - Bronze or Silver certification: a phase out strategy for potentially harmful materials is in place.
  - Gold and Platinum certification: Products may not contain any of the potentially harmful materials.
- Supports earning [LEED v4 Building Product Disclosure and Optimization - Material Ingredients](#) credits. C2C v2 Gold and higher, and C2C v3 Silver support earning more credits than lower ratings.



## BIFMA Level Eco-Label Background

- Products bearing label have been certified by an independent third party to meet the criteria of ANSI/BIFMA e3-2012.
- Standard includes prerequisites and optional credits. Number of optional credits received determines if product is rated Level 1, 2, or 3.
- DC's Sustainable Purchasing Program requires BIFMA Level certified furniture products earn at least one point for Credit 7.6, Low-emitting Furniture. This is detailed on the product scorecard submitted by the manufacturer to earn BIFMA certification and is available on websites or by request from the manufacturer. Local vendors also can be of assistance in researching this information as needed.
- BIFMA Level certified products with Level Credit 7.6 support earning [LEED v4 Indoor Environmental Quality: Low-Emitting Materials credit](#).

# Search Tips: DC Supply Schedule Vendor Catalogue



office | **CHAIRS** Furniture

**HON.**  
Purpose™ Series  
Fits everyone. Goes everywhere.





- Engineered to support users without complex manual adjustments.
- Innovative YouFit™ technology delivers a personal fit with three distinct flex zones.
- Designed to work well in a variety of spaces while providing custom comfort to a wide range of users.
- Supports up to 300 lbs.
- The HON Full Lifetime Warranty.
- Contains 19% total recycled content.
- Scientific Certification Systems (SCS) Certified Indoor Advantage Gold™; level® 2 Certified; Meets or exceeds ANSI/BIFMA and ISTA performance standards. 

No.	Color	Shpg. Wt.	Unit	Price
<b>① – ③ Upholstered Flexing Task Chair</b>				
Adjustable-height arms allow the user to easily move the arms up and down. Upholstered seat and back provide an extra layer of cushioning. Seat: 19½" × 16". Back: 18" × 19¼". Overall height: 33¼" to 37¼".				
<b>① Black Frame</b>				
HON-RW101ONCU10	Black	32 lbs.	Each	549-99
<b>② Platinum Frame</b>				
HON-RW101PTCU10	Black	32 lbs.	Each	549-99
HON-RW101PTCU19	Iron Ore	32 lbs.	Each	549-99

**YouFit™ Technology features 3 unique flex zones**



- 1 Responds to user's movement to deliver constant back and lumbar support
- 2 Facilitates back recline
- 3 Evenly distributes pressure points for enhanced comfort


office |

CHAIRS

Furniture

# HON. Purpose™ Series

**Fits everyone. Goes everywhere.**

- Engineered to support users without complex manual adjustments.
- Innovative YouFit™ technology delivers a personal fit with three distinct flex zones.
- Designed to work well in a variety of spaces while providing custom comfort to a wide range of users.
- Supports up to 300 lbs.
- The HON Full Lifetime Warranty.
- Contains 19% total recycled content.
- Scientific Certification Systems (SCS) Certified Indoor Advantage Gold™; level® 2 Certified; Meets or exceeds ANSI/BIFMA and ISTA performance standards. 



● **Meets multiple eco label requirements**

# Search Tips: Manufacturer Web Sites

- Furniture companies often have environmental information and data sheets and eco-label certificates in the sustainability sections of their web sites. It often is referred to as product sustainability or product environmental information.

# Search Tips: Manufacturer Web Sites

The image shows a screenshot of the HON website homepage. At the top left is the HON logo. To its right are four navigation links: "Our Products", "Request Catalog", "Customer Support", and "Where to Buy". Below this is a large banner for "New Fabric Offerings Now Available!". The banner features three sections: "Momentum Color Card" with a grid of colorful fabric swatches, "Mica" with a close-up of a textured fabric, and "Etch" with another textured fabric. A green button in the center of the banner says "Download the Digital Swatch Cards Now". Below the banner, there are several menu items. On the left, "10500 Series™ Desks" is accompanied by an image of a desk and chair. To its right are links for "Fabrics & Finishes", "Keys & Accessories", "Video Showcase", "HON Sustainability" (circled in red), and "HON Chair Chooser". On the right side of the page, there is a vertical menu with links for "Business", "Government", "Education", and "Healthcare". At the bottom left of the desk image area is a green button that says "Learn more".

**HON.**

[Our Products](#) [Request Catalog](#) [Customer Support](#) [Where to Buy](#)

## New Fabric Offerings Now Available!

Momentum Color Card Mica Etch

Download the Digital Swatch Cards Now

**10500 Series™**  
Desks

**Fabrics & Finishes** ▶  
View our diverse fabric and finish offering.

**Keys & Accessories** ▶  
Find accessories to complement your work environment.

**Video Showcase** ▶  
Discover the latest innovative workplace solutions.

**HON Sustainability** ▶  
Find out how HON is innovating today for a better tomorrow.

**HON Chair Chooser** ▶  
Use this tool in order to find the best HON or basyx by HON chair for you.

**Business** ▼  
• Furniture for your business

**Government** ▶

**Education** ▶

**Healthcare** ▶

[Learn more](#) ▶



## Download Brochures >

-  Corporate Responsibility
-  Environmental Responsibility



**HON.** thinks  green

## Our Philosophy

Innovations

LEED

**Product Responsibility**

- Desking
- Workstations
- Seating
- Storage & Files
- Tables
- Education

## Our Philosophy

At HON, we take pride in helping our customers create productive environments that leave a lasting impression. But often, the best impressions are the ones never seen. Our greatest impact is our ability to change the business world without changing the environment. By making a commitment to responsibly design and manufacture quality products, we exceed our customers' expectations while being good stewards of the earth. We work diligently to build a culture that encourages excellence, involvement, ongoing education, diversity and responsibility. We continually challenge ourselves to always do more. "HON Thinks Green" is more than a slogan, it's a promise.

## Lean Leads to Green *Eliminating Waste in Every Form*

Lean is doing more with less, minimizing waste in all of its forms and ensuring maximum efficiency in everything we do. Lean provides HON customers with superior value with less complexity from a supplier.

## Product Responsibility

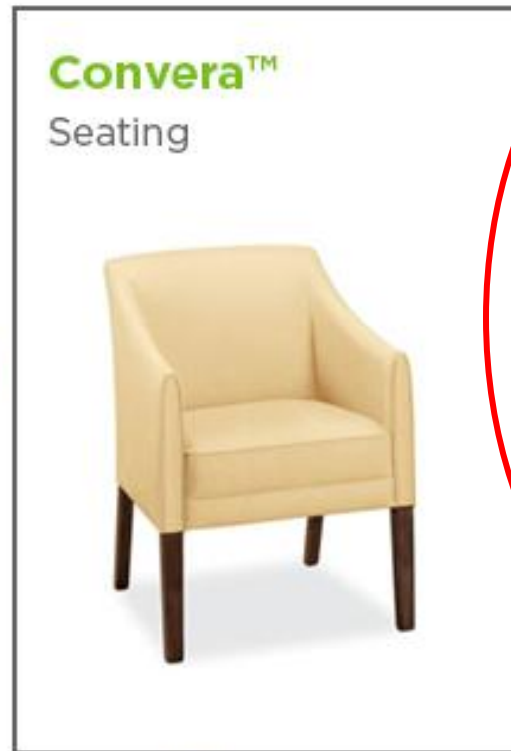
At HON, we take our responsibility to the earth seriously. We take advantage of every step in the product life cycle to minimize our environmental footprint. It starts with designing and manufacturing products that incorporate recycled content whenever possible. We have also significantly reduced the amount of packaging and waste involved in the transportation and installation of our products. It doesn't begin and end with us. We work with our suppliers, dealers and our customers to continually identify areas for environmental improvement. At HON, environmental stewardship is not a new idea, it's at the core of everything we do.

Desking	<b>Product Responsibility</b> HON product development incorporates Design for the Environment (DfE) processes to ensure that products provide long, reliable service. Materials are chosen to reduce impacts and be recyclable when the product reaches the end of its useful life. Links to Disassembly Instructions are provided with each product group.
Workstations	
Seating	
Storage & Files	<b>Indoor Air Quality</b> Virtually all HON products are certified to the ANSI/BIFMA Furniture Emissions Standard. Links to Indoor Air Quality certificates are provided with each product group.
Tables	<a href="#">Indoor Air Certificates</a>
Education	<b>level® ANSI/BIFMA e3 Furniture Sustainability Standard</b> Virtually all products have achieved level certification based on the ANSI/BIFMA e3 Sustainable Furniture Standard. level provides measurable, market-based definitions of progressively more sustainable furniture by establishing criteria that address social and environmental aspects throughout the supply chain. Links to level certificates are provided with each product group. <a href="#">level® Certificates</a>

## Seating

Wood is a slow renewable resource, so rather than destroying virgin forests we use post-consumer wood waste for many of our seating components, like Ignition® and Ceres®. Typically, you would find chemical-based foam used for padding, but we find it more comfortable for the user and the environment to use soy-based materials.

- Desking
- Workstations
- Seating
- Storage & Files
- Tables
- Education



### Environmental Aspects

- level® Certificates
- SCS Indoor Advantage Certificates
- Environmental Data Sheets
- Disassembly Instructions
- Repreve® Certifications
- Ceres® Environmental Summary



# Search Tips: GREENGUARD



## Sustainable Product Guide

[Home](#) [Contact Us](#) [MyULEnvironment](#)

### Search For Products

Keyword Search  Energy Efficiency Certified Products

[Reset Search](#)

13201 results found for **GREENGUARD Certification** > **Furniture**

Evaluation Type **+**

Show  per page

Go to Page

[1](#) [2](#) [3](#) [4](#) [5](#) ... [826](#) > [next](#)

Product Category **+**

Subcategory **+**

- Accessories
- Bookcases/Storage
- Carts
- Case Goods
- Casework
- Early Learning Furniture
- Educational
- Healthcare
- Lockers
- Lounge Seating
- Movable Walls
- Residential Furniture
- Seating



9 to 5 Seating/Agent  
**GREENGUARD**  
GREENGUARD Gold



9 to 5 Seating/Aria  
GREENGUARD  
GREENGUARD Gold



9 to 5 Seating/Axis  
GREENGUARD  
GREENGUARD Gold



9 to 5 Seating/Bella  
GREENGUARD  
GREENGUARD Gold



9 to 5 Seating/Benchmark  
GREENGUARD  
GREENGUARD Gold



9 to 5 Seating/Brio  
GREENGUARD  
GREENGUARD Gold



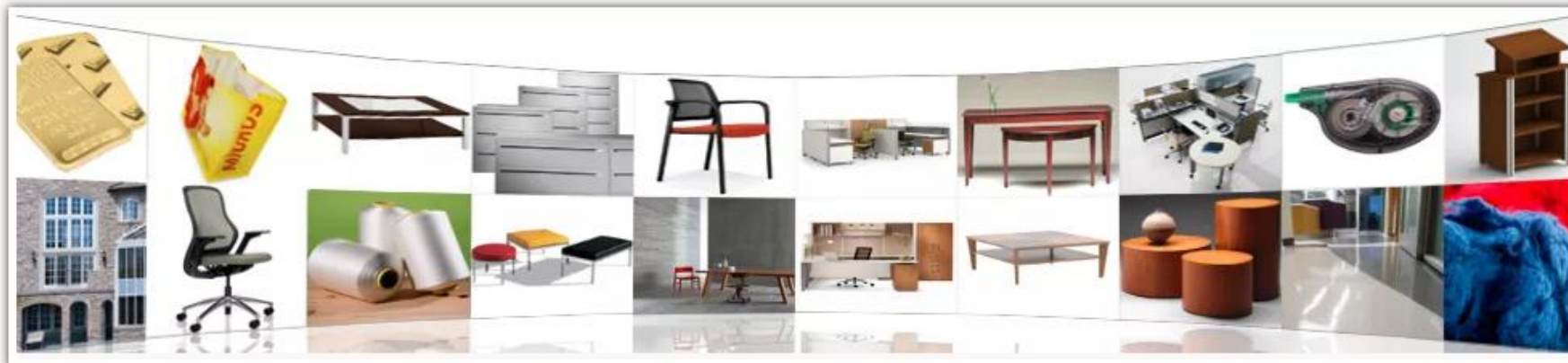
9 to 5 Seating/Bristol  
GREENGUARD  
GREENGUARD Gold



9 to 5 Seating/Cayman  
GREENGUARD  
GREENGUARD Gold



# Search Tips: SCS Indoor Advantage



## Certified Green Products Guide

Your online directory for SCS certified green products

Enter search term(s)

Search

Filters

Advanced Search

<http://www.scsglobalservices.com/certified-green-products-guide>

Services ▼

Certified Clients ▼

About ▼

Training ▼

## Certified Green Products Guide

Your online directory for SCS certified green products

Enter search term(s)

Search

Filters

Enter your search criteria below. Start at the top and work your way down. Each selection you make narrows your search and helps to ensure you will get the results you want.

Furniture ▼

Seating ▼

Product Type ▼

Manufacturer ▼

Indoor Advantage - Furniture ▼

Reset

Search

Options Using the Advanced Search Feature

# Certified Green Products Guide

Your online directory for SCS certified green products

Enter your search criteria below. Start at the top and work your way down. Each selection you make narrows your search and helps to ensure you will get the results you want.

163 res



Criterion®  
by Steelcase Inc.



Mansfield™ (guest)  
by Steelcase Inc.



Criterion® Plus  
by Steelcase Inc.



Gentry®  
by Steelcase Inc.





Services ▾

Certified Clients ▾

About ▾

Training ▾



## Criterion®

By Steelcase Inc.



### level® 1

view certificate [SCS-SCF-01905](#)  
2009.03.20 - 2015.09.01

### Indoor Advantage - Furniture

view certificate [SCS-IAQ-01447](#)  
2007.06.07 - 2015.08.31

See full details on [Steelcase Inc.'s website](#)





SCS Global Services does hereby certify that an independent assessment has been conducted on behalf of:

# Steelcase Inc.

901 44th Street SE, Grand Rapids, MI, United States

For the following product(s):

## Task Seating:

à la carte®, Criterion®, Criterion® Plus, Gentry®, Jacket®, Jersey®

This product meets all of the necessary qualifications to be certified for the following claim:

## Indoor Advantage™

Indoor Air Quality Certified to SCS-EC10.3-2014

Conforms to the ANSI/BIFMA Furniture Emissions Standard (M7.1/X7.1-2011) for the seating parameters<sup>1</sup>. Also conforms to ANSI/BIFMA e3-2012 (Credit 7.6.1) for the seating parameters<sup>1</sup>.

<sup>1</sup> Modeled as Seating

Registration # SCS-IAQ-01447

Valid from: October 1, 2014 to August 31, 2015



INDOOR ADVANTAGE  
FURNITURE



ANSI ACCREDITED PROGRAM  
PRODUCT CERTIFICATION  
#0821

A handwritten signature in blue ink that reads "Robert J. Hrubes".

Robert J. Hrubes, Ph.D., Executive Vice President  
SCS Global Services  
2000 Powell Street, Ste. 600, Emeryville, CA 94608 USA

**SCS**global  
SERVICES



# Search Tips: Cradle to Cradle

Product certification

[Close and Return to Results](#)

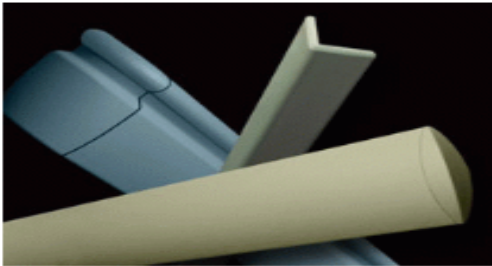
## Cradle to Cradle Certified GOLD

### ACROVYN® 4000 WALL PROTECTION - PROFILE AND SHEET (SELECT COLORS)

Construction Specialties, Inc.

Certification Standard Version 2.1.1

[PRODUCT WEBSITE](#)



Renewal date 10 May 2015

C/S Acrovyn® 4000 PBT-free wall guards contain no PVC nor BPA, carry a UL Class 1 fire rating, and meet the CA 01350 protocol for good indoor air quality. Acrovyn 4000 provides the same impact protection as original Acrovyn, features a contemporary new texture for improved aesthetics and easier cleaning, and costs no more than traditional wall guards.

*Acrovyn® 4000 Wall Protection Profile and Sheet in the following colors: Eggshell, French Cream, Desert Sand, Beige, Mocha, Black, Pearl Gray, Charcoal, Champagne, Tan Bark, Gingerspice, Chinchilla, Fawn, Beige Desert, Slate, Danube, Wheat, Driftwood, Fog, Caramel, Mushroom, Sienna, Tranquil Blue, Yosemite Sand, Celery, Ozark, Galveston Gray, Chestnut, Kona, Russet, Peanut Brittle, Serene Green, Underseas, Cape Blue, Cappuccino, Toffee, Khaki Brown, Teton White, Sage Green, Aspen, Pumice, Doeskin, Almond, Folkstone, Oyster Gray, Blue Silk, Mission White, Pearl, Irish Cream, White*

Filed under: [Interior Design & Furniture](#) , [Wall Coverings](#) , [10 00 00 - Specialties](#) , [10 20 00 - Interior Specialties](#)

[This product is Cradle to Cradle Certified Gold under Version 2.1.1 of the Cradle to Cradle Certified Product Standard](#)



**CRADLE TO CRADLE CERTIFIED™  
PRODUCT SCORECARD**

MATERIAL HEALTH	GOLD
MATERIAL REUTILIZATION	GOLD
RENEWABLE ENERGY & CARBON MANAGEMENT	GOLD
WATER STEWARDSHIP	GOLD
SOCIAL FAIRNESS	GOLD
<b>OVERALL CERTIFICATION LEVEL</b>	<b>GOLD</b>

[What's this?](#)

✓ LEED Material Ingredients Credit Eligible



# Search Tips: BIFMA Level

## Product Details

**Manufacturer**  
**Product Name**  
**Description**  
**Image**

Affordable Interior Systems (AIS)  
DiVi

DiVi is designed to be the most cost-efficient monolithic and segmented panel system on the market.



**Product URL**  
**Categories**  
**Contact Name**  
**Phone**  
**Email**  
**Certifier**  
**Certificates**

<http://www.ais-inc.com/>  
Systems → Panel  
Jen Trapuzzano  
978.562.7500  
[jtrapuzzano@ais-inc.com](mailto:jtrapuzzano@ais-inc.com)  
SCS Global Services


### level 2

<i>Certificate Number</i>	SCS-SCF-03219
<i>Certification Date</i>	2013-11-22
<i>Expiration Date</i>	2015-11-30
<i>Certificate URL</i>	<a href="http://www.scscertified.com/products/cert_pdfs/AIS_2012_S...">http://www.scscertified.com/products/cert_pdfs/AIS_2012_S...</a>
<i>Restrictions</i>	[blank]

# Evaluating the BIFMA/Level Product Certification Scorecard

- **BIFMA/Level** products require a scorecard that shows at least one point for Level Credit 7.6, Low-emitting Furniture
- All Level-certified products receive a product scorecard during the certification process
  - The scorecard shows how each product earned points to become certified
  - It is important to review the scorecard to verify that a product received credit for low-emitting materials
- Some manufacturers post their scorecards online. Other times, you need to request the scorecard
- The next slide provides an example of how to evaluate the scorecard

Kimball Office ANSI/BIFMA level® Scorecard

 Company: Kimball Office  
 Certificate Number: SCS-SCF-03157  
 Certification level: 3  
 Product Type: Wood Seating  
 Acapella, Collage, Richland, Stature

Elements	Category	Points Available	Points Earned
<b>5.0 Materials</b>			
Prereq 5.1	Design for Environment Program	4	4
Credit 5.2	Climate Neutral Materials	1	
Credit 5.3	Life Cycle Assessment	3	
Credit 5.4	Efficient Use of Materials	2	2
Credit 5.5	Bio-based Renewable Materials - Excluding Wood	2	
Credit 5.6	Bio-based Renewable Materials - Sustainable Wood	2	
Credit 5.7	Recycled Content	3	
Credit 5.8	Recyclable and Biodegradable Materials	1	
Credit 5.9	Extended Product Responsibility	6	6
Credit 5.10	Solid Waste Management	2	2
Credit 5.11	Water Management	4	1
Totals for this section:		26	11
<b>6.0 Energy</b>			
Prereq 6.1	Develop Energy Policy	4	4
Credit 6.2	Building Energy Performance	3	3
Credit 6.3	Energy Star Equivalency	4	4
Credit 6.4	LEED Building(s)	2	2
Credit 6.5	Embodied Energy	3	
Credit 6.6	Finished Product Energy Consumption	1	
Credit 6.7	Transportation	2	2
Credit 6.8	On-site & Off-site Renewable Energy	4	4
Credit 6.9	Greenhouse Gases	6	6
Totals for this section:		25	21
<b>7.0 Human and Ecosystem Health</b>			
Prereq 7.1.1	Demonstration of Compliance	4	4
Prereq 7.1.2	Key Chemical, Risk, & EMS Policies	4	4
Credit 7.2	ISO 14001 or equivalent	2	2
Credit 7.3	Chemical Management Plan - Facility	1	1
Credit 7.4	Effects of Process & Product Chemicals		
7.4.1	Product Level (Material Specification)	4	4
7.4.2	Process Level (Process Chemicals)	1	1
7.4.3	Maintenance/Operation Level	1	1
7.4.4	Chemical Reduction Strategy	1	1
Credit 7.5	Reduction/Elimination of Chemicals of Concern		
7.5.1	Elimination from Products	8	2
7.5.2	Reduction from Processes	4	4
7.5.3	Reduction from Maintenance/Operation	1	
7.5.4	Reduction of Hazardous Waste & Emissions	4	3
Credit 7.6	Low Emitting Furniture	3	3
Totals for this section:		30	21
<b>8.0 Social Responsibility</b>			
Prereq 8.1.1	Employee Health & Safety Management	4	4
Prereq 8.1.2	Labor and Human Rights	4	4
Credit 8.2	Policy on Social Responsibility	1	1
Credit 8.3	External Health & Safety Management Standard	1	1
Credit 8.4	Inclusiveness	1	1
Credit 8.5	Engage in Community Outreach & Involvement	1	1
Credit 8.6	Social Responsibility Reporting	3	3
Credit 8.7	Supply Chain	3	3
Totals for this section:		10	10
<b>Total points:</b>		<b>91</b>	<b>63</b>

\* All prerequisites have been met  
 32-44 points = level 1, 45-62 points = level 2, 63-91 points = level 3

Elements	Category	Points Available	Points Earned
<b>5.0 Materials</b>			
Prereq 5.1	Design for Environment Program	1	1
Credit 5.2	Climate Neutral Materials	1	1
Credit 5.3	Low Cycle Assessment	3	3
Credit 5.4	Efficient Use of Materials	2	2
Credit 5.5	Bio-based Renewable Materials - Excluding Wood	2	2
Credit 5.6	Bio-based Renewable Materials - Sustainable Wood	2	2
Credit 5.7	Recycled Content	3	3
Credit 5.8	Recyclable and Biodegradable Materials	1	1
Credit 5.9	Extended Product Responsibility	6	6
Credit 5.10	Good Waste Management	2	2
Credit 5.11	Water Management	4	4
Totals for this section:		26	11

Elements	Category	Points Available	Points Earned
<b>6.0 Energy</b>			
Prereq 6.1	Develop Energy Policy	1	1
Credit 6.2	Building En	1	1
Credit 6.3	Energy Star	1	1
Credit 6.4	LEED Build	1	1
Credit 6.5	Empowered	1	1
Credit 6.6	Insulated R	1	1
Credit 6.7	Transport	1	1
Credit 6.8	Circle &	1	1
Credit 6.9	Greenhou	1	1

Elements	Category	Points Available	Points Earned
<b>7.0 Human and Ecosystem I</b>			
Prereq 7.1.1	Demonstr	1	1
Prereq 7.1.2	Key Chem	1	1
Credit 7.2	ISO 14001	2	2
Credit 7.3	Chemical	1	1
Credit 7.4	Effects of	4	4
7.4.1	Product Le	1	1
7.4.2	Process Le	1	1
7.4.3	Maintenan	1	1
7.4.4	Chemical	1	1
Credit 7.5	Reduction	4	4
7.5.1	Eliminatio	1	1
7.5.2	Reduction	1	1
7.5.3	Reduction	1	1
7.5.4	Reduction	1	1
Credit 7.6	Low Emitt	3	3

Elements	Category	Points Available	Points Earned
<b>8.0 Social Responsibility</b>			
Prereq 8.1.1	Employee	1	1
Prereq 8.1.2	Labor and	1	1
Credit 8.3	External	1	1
Credit 8.4	Inclusive	1	1
Credit 8.5	Engage in	1	1
Credit 8.6	Local Res	1	1
Credit 8.7	Supply Cha	1	1

\* All prerequisites have been met  
32-44 points = level 1, 45-64 points



## Kimball Office ANSI/BIFMA level® Scorecard

Company  
Certificate Number  
Certification level

Product Type: Wood Seating

Kimball Office  
SCS-SCF-03157  
3

Acapella, Collage, Richland, Stature

Elements	Category	Points Available	Points Earned
----------	----------	------------------	---------------

### 7.0 Human and Ecosystem Health

Prereq 7.1.1	Demonstration of Compliance	1	1
Prereq 7.1.2	Key Chemical, Risk, & EMS Policies	1	1
Credit 7.2	ISO 14001 or equivalent	2	2
Credit 7.3	Chemical Management Plan - Facility	1	1
Credit 7.4	Effects of Process & Product Chemicals	4	4
7.4.1	Product Level (Material Specification)	1	1
7.4.2	Process Level (Process Chemicals)	1	1
7.4.3	Maintenance/Operation Level	1	1
7.4.4	Chemical Reduction Strategy	1	1
Credit 7.5	Reduction/Elimination of Chemicals of Concern	4	4
7.5.1	Elimination from Products	1	1
7.5.2	Reduction from Processes	1	1
7.5.3	Reduction from Maintenance/Operation	1	1
7.5.4	Reduction of Hazardous Waste & Emissions	1	1
Credit 7.6	Low Emitting Furniture	3	3

Totals for this section: 30 21



3



# Environmental Data Sheets



- Some manufacturers publish **environmental data sheets** that show the environmental characteristics of their products
- Environmental data sheets may be a useful reference in finding furniture that meets the specification, especially if you can't easily locate the BIFMA/Level Certification Scorecard
- Be sure to use a current version of the data sheet, and ask the vendor if you have any questions

## The Hon Company Inc. Environmental Data Sheet For Office Furniture

Section 1. Identity			
Product:	Purpose Seating		
Manufacturer:	The Hon Company Inc. 200 Oak Street Muscatine, IA 52761		
General Contact:	Customer Support Department 800-336-8398 <a href="http://www.hon.com">http://www.hon.com</a>		
Technical Contact:	Courtney Moline <a href="mailto:molinec@honcompany.com">molinec@honcompany.com</a>		
Section 2. Major Material Description			
Material	Percentage by Weight	Recycled Content	End-of-Life Management <sup>1</sup>
Thermoplastics	67%	3% PC 2% PI	Recycle where possible. Landfill if necessary.
Steel	18%	25% PC 7% PI	Recycle where possible Landfill if necessary
Aluminum	15%	70% PC 30% PI	Recycle where possible Landfill if necessary
Miscellaneous	< 1%	N/A	Recycle where possible Landfill if necessary
Corrugated Packaging <sup>2</sup>	NA	74% PC avg	Recycle
Inputs for LEED-CI MR 4.1 & 4.2 credits	Recycled Content	16% Post-Consumer (PC) 6% Pre-Consumer (PI)	RC Value factor = .19 <sup>3</sup>
Comments:			
<ol style="list-style-type: none"> <li>The Hon Company complies with the Federal Trade Commission's Part 260 <i>Guide for the Use of Environmental Marketing Claims</i>. Product recyclability depends on local programs.</li> <li>The Hon Company encourages the use of bulk packaging and blanket wrap where appropriate.</li> <li>Adding 50% of the post-industrial recycled content and 100% of the post-consumer recycled content and then dividing the resulting weight by the total weight of the product derives the value factor. Multiplying the value factor by the total purchase price of the product determines the product's contribution toward the Project's recycled content threshold.</li> <li>Instructions for disassembling HON Company products for recycling can be found here: <a href="https://honready.hon.com">https://honready.hon.com</a>.</li> <li>Information on recycling office furniture components and other assembled products is available from the USEPA Office of Waste and Recycling in your region, please visit: <a href="http://www.epa.gov/waste/wvl/regional.htm">http://www.epa.gov/waste/wvl/regional.htm</a>.</li> </ol>			
Section 3. Process Description			
<ul style="list-style-type: none"> <li>Formed steel components are painted using thermo-set powder coat.</li> <li>Components are assembled using mechanical fasteners and/or welding. The seat may be a water-based adhesive to bond the foam to the plastic and upholstery.</li> <li>A polyethylene bag covers the chair and is placed in a corrugated cardboard carton for shipment to end user.</li> </ul>			
Section 4. Indoor Air Emissions			
Test Methodology: CA Spec 1350	Test Location: Berkeley Analytical, Richmond, CA	Original Test Date: 2013	
Indoor Air Quality Certification	Scientific Certification Systems (SCS)	Indoor Advantage Gold	
Standard	Compound	Criteria	Acceptable
BIFMA X7.1 – 2007	TVOC	≤0.5 mg/m <sup>3</sup>	Yes
	Formaldehyde	≤50 ppb	Yes
	Total Aldehydes	≤100 ppb	Yes
	4-phenylcyclohexene	≤0.0065 mg/m <sup>3</sup>	Yes
Cal. Specification 1350-2006	Chronic Ref Exposure Levels	Various	
Title VI of the 1990 Clean Air Act Amendments. (CFCs & HCFCs)	This product does not contain and is not manufactured with ozone depleting chemicals.		
U.S. Occupational Safety & Health Administration (OSHA) <sup>1</sup>	Formaldehyde	< 0.10 ppm	Yes
World Health Organization (WHO)	Formaldehyde	< 0.10 ppm	Yes
United States Green Building Council Leadership in Energy and Environmental Design (USGBC LEED-CI	TVOC	≤0.5 mg/m <sup>3</sup>	Yes
	Formaldehyde	≤ 50 ppb	Yes

The Hon Company Inc. Environmental Data Sheet For Office Furniture

Section 1. Identity			
Product:	Purpose Seating		
Manufacturer:	The Hon Company Inc. 200 Oak Street Muscatine, IA 52761		
General Contact:	Customer Support Department 800-316-8398 http://www.hon.com		
Technical Contact:	Courtney Motine molinec@honcompany.com		
Section 2. Major Material Description			
Material	Percentage by Weight	Recycled Content	End-of-Life Management
Thermoplastics	67%	3% PC 2% PI	Recycle where possible Landfill if necessary.
Steel	18%	25% PC 7% PI	Recycle where possible Landfill if necessary
Aluminum	15%	70% PC 30% PI	Recycle where possible Landfill if necessary
Miscellaneous	< 1%	N/A	Recycle where possible Landfill if necessary
Corrugated Packaging	NA	74% PC avg	Recycle
Inputs for LEED-CI MR 4.1 & 4.2 credits	Recycled Content	16% Post-Consumer (PC) 6% Pre-Consumer (PI)	RC Value factor = .19 <sup>3</sup>


Comments:  
 1. The Hon Company complies with the Federal Trade Commission's Part 260 Guide for the Use of Environmental Marketing Claims. Product recyclability depends on local programs.  
 2. The  
 3. Add  
 the  
 tot  
 thr  
 of  
 4. Inst  
 5. Inf  
 of  
 6. For  
 Cor  
 bor  
 Ap

Test Method  
Indoor Air Qu

C  
Title VI of  
U.S. Occup  
Wor  
United State  
Energy and

© 2009 The Ho  
Marketing Clai

## Section 4. Indoor Air Emissions

Test Methodology: CA Spec 1350		Test Location: Berkeley Analytical, Richmond, CA		Original Test Date: 2013			
Indoor Air Quality Certification		Scientific Certification Systems (SCS)		Indoor Advantage Gold			
Standard		Compound		Criteria		Acceptable	
 <b>BIFMA X7.1 – 2007</b>		TVOC		≤0.5 mg/m <sup>3</sup>		Yes ✓	
		Formaldehyde		≤50 ppb		Yes ✓	
		Total Aldehydes		≤100 ppb		Yes ✓	
		4-phenylcyclohexene		≤0.0065 mg/m <sup>3</sup>		Yes ✓	
		Cal. Specification 1350-2006		Chronic Ref Exposure Levels		Various	
Title VI of the 1990 Clean Air Act Amendments. (CFCs & HCFCs)		This product does not contain and is not manufactured with ozone depleting chemicals.					
U.S. Occupational Safety & Health Administration (OSHA) <sup>1</sup>		Formaldehyde		< 0.10 ppm		Yes	
World Health Organization (WHO)		Formaldehyde		< 0.10 ppm		Yes	
United States Green Building Council Leadership in Energy and Environmental Design (USGBC LEED-CI)		TVOC		≤0.5 mg/m <sup>3</sup>		Yes	
		Formaldehyde		≤ 50 ppb		Yes	

EQ Credit 4.5 Systems Furniture Option C)	Total Aldehydes	≤ 100 ppb	Yes
	4-phenylcyclohexene	≤0.0065 mg/m <sup>3</sup>	Yes
<b>Notes: Additional data may available upon request.</b> 1. OSHA – (29 CFR) 1910.1048 2. Tested and certified as part of a complete BIFMA typical open plan workstation per BIFMA X7.1 & M7.1-2007			

# Product Environmental Data Sheets for Furniture Manufacturers Web Page Links

- Global Office Product Environmental Data Sheets  
[http://204.101.149.220/engineeringweb/enviro\\_search.php?PHPSESSID=i832fouusq4jrkosasrkefqna7](http://204.101.149.220/engineeringweb/enviro_search.php?PHPSESSID=i832fouusq4jrkosasrkefqna7)
- Hon Environmental Data Sheets  
<https://honready.hon.com/pc/Pages/EnvironmentalDataSheets.aspx>
- Steelcase Environmental Profiles and Certificates  
<http://www.steelcase.com/en/Company/sustainability/Pages/Product-Documentation.aspx>
- Herman Miller
  - Environmental product information downloadable from page for each product. <http://www.hermanmiller.com/products.html>



# Resources

- Table of Ecologos that meet LEED low emitting material credit specifications:

<http://www.usgbc.org/sites/default/files/Low%20Emitting%20Third%20Party%20Certifications%20and%20Labels%20Oct%202014%20Update.pdf>

# Beyond the Specification

- Specify [EPA's Comprehensive Procurement Guidelines](#) (recycled content) to reduce demand for virgin wood and other natural resources:

Product	Material	Postconsumer Content (%)	Total Recovered Materials Content (%)
Furniture structure	Steel	16	25-30
Furniture structure	Aluminum	--	75-100
Cellulose Loose-Fill and Spray-On	Postconsumer Paper	75	75
Particleboard/ Fiberboard component	Wood or wood composite	Greater than 0	80-100
	Agricultural fiber	--	100
Fabric	PET	100	100
Plastic furniture component	HDPE	70-75	95
Remanufactured or Refurbished Furniture	Various	25-75	25-75

office

CHAIRS

Furniture

# HON. Purpose™ Series

Fits everyone. Goes everywhere.

- Engineered to support users without complex manual adjustments.
- Innovative YouFit™ technology delivers a personal fit with three distinct flex zones.
- Designed to work well in a variety of spaces while providing custom comfort to a wide range of users.
- Supports up to 300 lbs.
- The HON Full Lifetime Warranty.
- Contains 19% total recycled content.
- Scientific Certification Systems (SCS) Certified Indoor Advantage Gold™; level® 2 Certified; Meets or exceeds ANSI/BIFMA and ISTA performance standards.



## Recycled Content Info

## The Hon Company Inc. Environmental Data Sheet For Office Furniture

### Section 1. Identity

Product:	Purpose Seating
Manufacturer:	The Hon Company Inc. 200 Oak Street Muscatine, IA 52761
General Contact:	Customer Support Department 800-336-8398 <a href="http://www.hon.com">http://www.hon.com</a>
Technical Contact:	Courtney Moline <a href="mailto:molinec@honcompany.com">molinec@honcompany.com</a>

### Section 2. Major Material Description

Material	Percentage by Weight	Recycled Content	End -of-Life Management <sup>1</sup>
Thermoplastics	67%	3% PC 2% PI	Recycle where possible. Landfill if necessary.
Steel	18%	25% PC 7% PI	Recycle where possible Landfill if necessary
Aluminum	15%	70% PC 30% PI	Recycle where possible Landfill if necessary
Miscellaneous	< 1%	N/A	Recycle where possible Landfill if necessary
Corrugated Packaging <sup>2</sup>	NA	74% PC avg	Recycle
Inputs for LEED-CI MR 4.1 & 4.2 credits	Recycled Content	16% Post-Consumer (PC) 6% Pre-Consumer (PI)	RC Value factor = .19 <sup>3</sup>

#### Comments:

1. The Hon Company complies with the Federal Trade Commission's Part 260 *Guide for the Use of Environmental Marketing Claims*. Product recyclability depends on local programs.
2. The Hon Company encourages the use of bulk packaging and blanket wrap where appropriate.
3. Adding 50% of the post-industrial recycled content and 100% of the post-consumer recycled content and then dividing the resulting weight by the total weight of the product derives the value factor. Multiplying the value factor by the total purchase price of the product determines the product's contribution toward the Project's recycled content threshold.
4. Instructions for disassembling HON Company products for recycling can be found here: <https://honready.hon.com>.
5. Information on recycling office furniture components and other assembled products is available from the USEPA Office of Waste and Recycling in your region, please visit: <http://www.epa.gov/waste/wyl/regional.htm>.

Recycled  
Content  
Information

# Beyond the Specification

- Specify **higher levels** of certification for greater environmental protection:
  - **Cradle to Cradle:** Bronze, Silver, Gold, or Platinum
  - **BIFMA Level:** Levels 2 or 3
  - **GREENGUARD:** Gold
  - **SCS Indoor Advantage:** Gold
- Higher levels of **Cradle to Cradle** are required to achieve **LEED credits** in certain categories.
- Products with higher levels of certification are **readily available.**



*Image courtesy of [www.dreamstime.com](http://www.dreamstime.com)*

# Beyond the Specification

- Buy **refurbished furniture** for greater environmental benefits :
  - **Conserve resources:** saves raw materials; uses 95% less energy than building new furniture from scratch
  - **Reduce pollution:** reduces air emissions
  - **Reduce solid waste:** saves landfill space
- **Certified dealers** for refurbished products:
  - Gen2 Office Furniture (Cleveland OH) - A re-manufacturer of Steelcase Systems: <http://www.gen2officefurniture.com>
  - Open Plan Systems (Richmond VA) - A re-manufacturer of Herman Miller Systems: <http://www.Openplansystems.com>
  - RSI Systems Furniture ( Chandler AZ) - A re-manufacturer of Haworth Systems: <http://www.RSIsystemsurniture.com>



*Image courtesy of www.dreamstime.com*

# Product Take-Back



*Image courtesy of [www.openideo.com](http://www.openideo.com)*

- Take-back services ensure that products that have reached the end of their useful life have been reused or recycled whenever possible
- District employees may donate used products to the **Surplus Property Division (SPD)**
  - For more information about how to utilize the SPD, call the OCP Customer Contact Center at 202-724-4477.
  - Options include reuse of the product within DC government, sale, recycling, or disposal as a last resort.